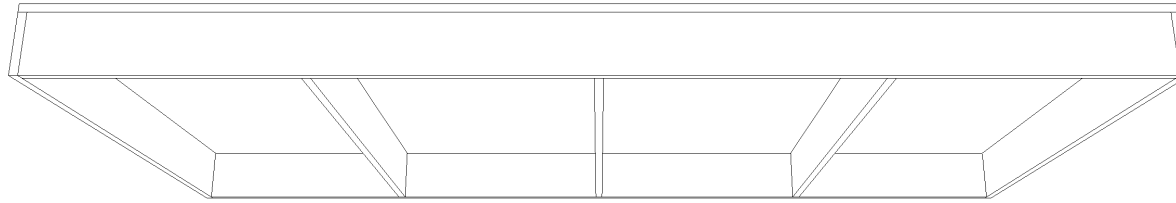
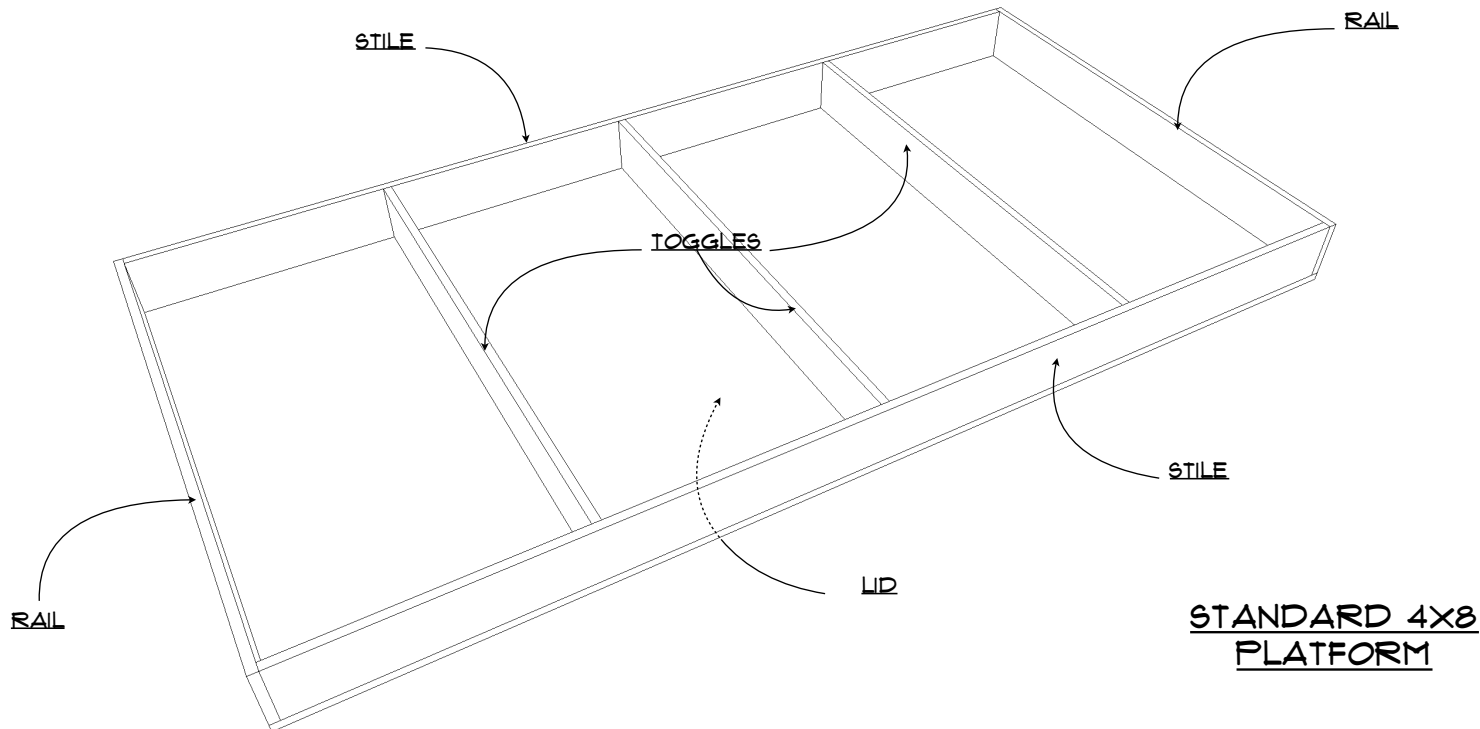
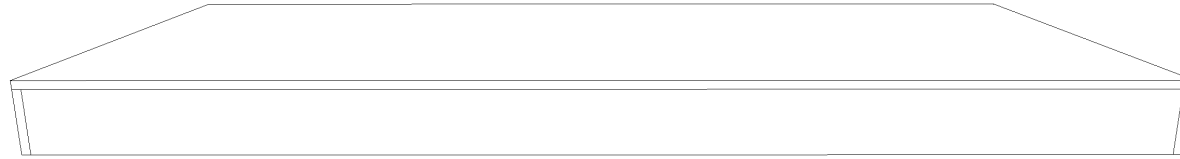


**STANDARD 4x8  
PLATFORM FRAME**  
ISOMETRIC VIEW



**STANDARD 4x8  
PLATFORM LID**  
ISOMETRIC VIEW



**STANDARD 4x8  
PLATFORM**

Technical Director/Contact Information:	DANIEL CZYPIŃSKI DCZTEIN@CALSTATELA.EDU
Drawn By:	DANIEL CZYPIŃSKI
Revision Date:	

Notes:	FRAME ASSEMBLED USING 2-1/2" COARSE THREAD DRYWALL SCREWS LID SECURED USING 1-5/8" COARSE THREAD DRYWALL
--------	---

Project:	STOCK SCENERY: STANDARD 4x8 PLATFORM
Director:	
Purpose:	INSTRUCTIONAL

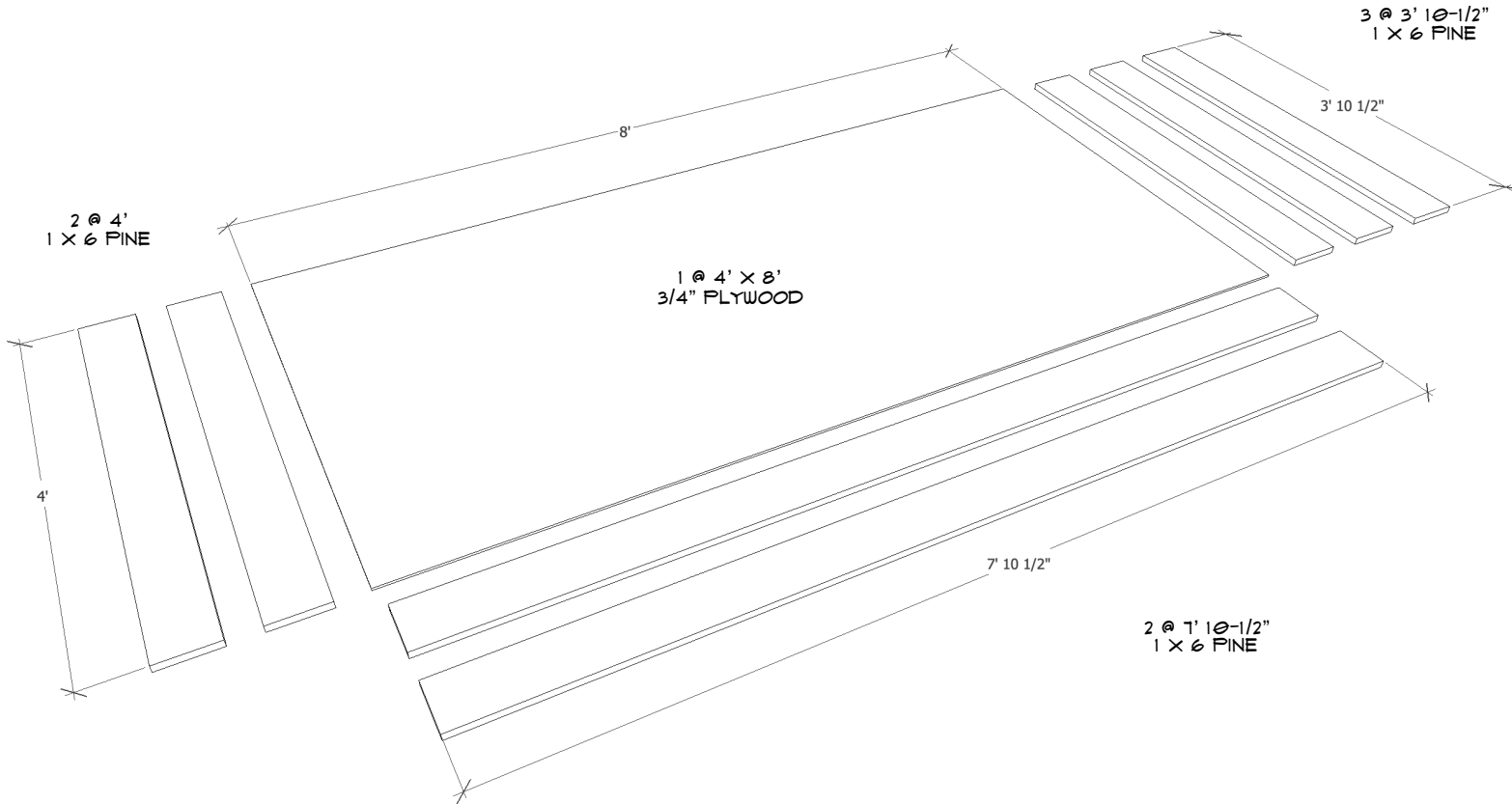
Date:	SEPTEMBER 2016
-------	----------------

Scale:	NOT TO SCALE
--------	--------------

Plate #:	1 OF 3
----------	--------------

CUT LIST

- 1 - 3/4" PLYWOOD @ 4' X 8'
- 2 - 1" X 6" PINE BOARDS @ 7' 10-1/2"
- 2 - 1" X 6" PINE BOARDS @ 4'
- 3 - 1" X 6" PINE BOARDS @ 3' 10-1/2"



Technical Director/Contact Information:  
**DANIEL CZYPIŃSKI**  
 DCZTEIN@CALSTATELA.EDU

Drawn By: DANIEL CZYPIŃSKI

Revision Date:

Notes:

Project: **STOCK SCENERY:  
STANDARD 4X8 PLATFORM**

Director:

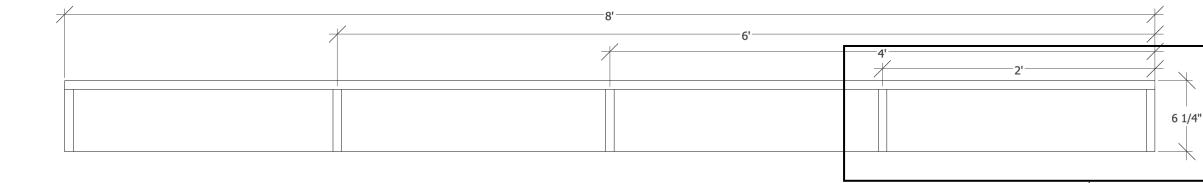
Purpose: **INSTRUCTIONAL**

Date: **SEPTEMBER 2016**

Scale: **NOT TO SCALE**

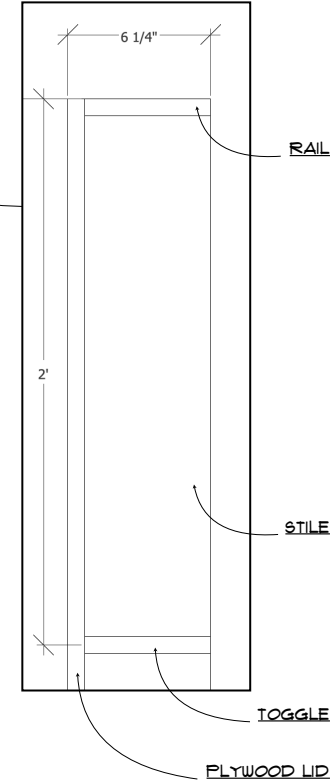
Plate #:  
**2  
OF  
3**

ASSEMBLY

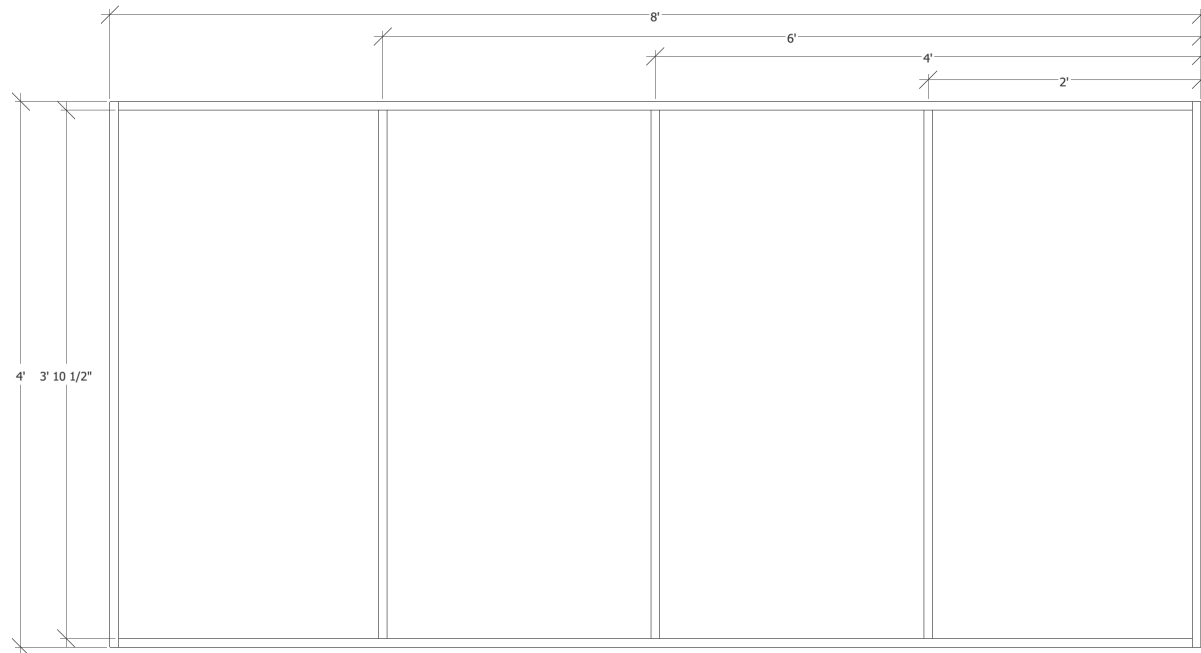


VIEW: SECTION

VIEW: DETAIL



NOTE: TOGGLES ARE  
POSITIONED @ 2'  
ON CENTER



VIEW: REAR ELEVATION

Technical Director/Contact Information:

DANIEL CZYPIŃSKI  
DCZTEIN@CALSTATELA.EDU

Drawn By: DANIEL CZYPIŃSKI

Revision Date:

Notes:

FRAME ASSEMBLED USING 2-1/2"  
COARSE THREAD DRYWALL  
SCREWS

LID SECURED USING 1-5/8"  
COARSE THREAD DRYWALL

Project:

STOCK SCENERY:  
STANDARD 4X8 PLATFORM

Director:

Purpose:

INSTRUCTIONAL

Date:

SEPTEMBER 2016

Scale:

NOT TO SCALE

Plate #:

3  
OF  
3